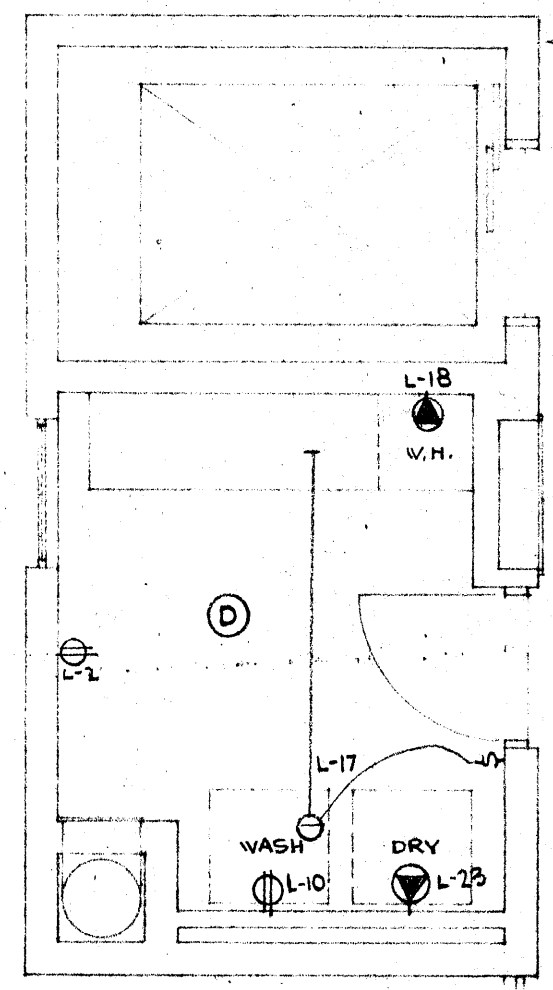
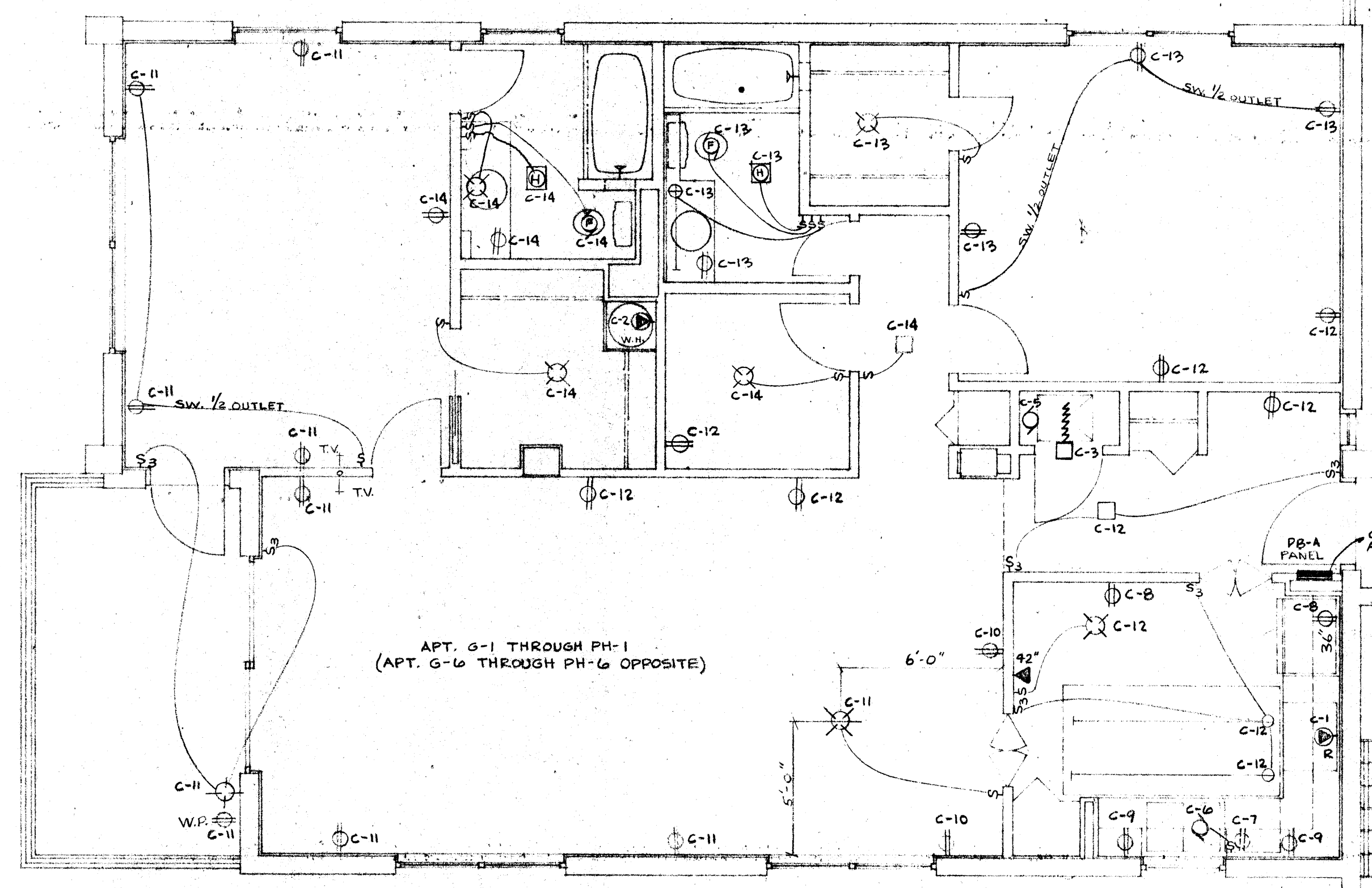


APARTMENT PANEL PB-A SCHEDULE					
CIRCUIT	VOLTS	POLES	BKR.	WIRE	PURPOSE
C-1	208	2	60A	2-BG THHN 1-BG TW	14KW RANGE/HOOD
C-2	DO	2	30A	#10	3 KW WATER HTR.
C-3	DO	2	SEE WIRING TABLE	SEE WIRING TABLE	ELECT HEATER
C-4	DO	2	SEE WIRING TABLE	SEE WIRING TABLE	AC UNIT
C-5	120	1	15A	#12	AH UNIT
C-6	DO	1	20A	DO	DISPOSAL
C-7	DO	1	DO	DO	DISHWASHER
C-8	DO	1	DO	DO	APPLIANCE
C-9	DO	1	DO	DO	DO
C-10	DO	1	DO	DO	DO
C-11	DO	1	DO	DO	LIGHTING
C-12	DO	1	DO	DO	DO
C-13	DO	1	DO	DO	DO
C-14	DO	1	DO	DO	DO
C-15	DO	1	DO	DO	DO

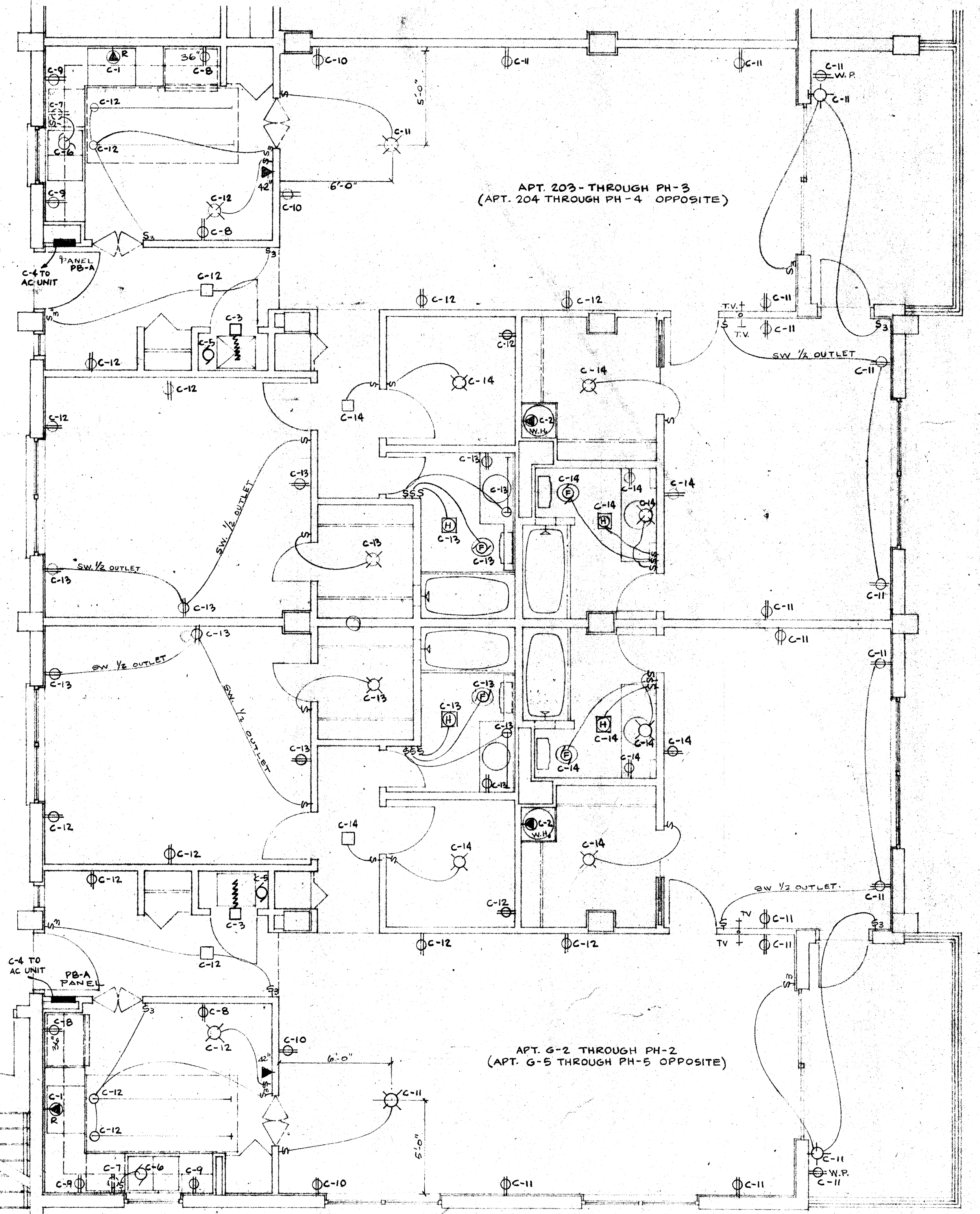
- NOTES:
1. CIRCUIT C-5 ON APT PH-1 & PH-6 TO HAVE 2P-15A BREAKER
 2. ALL CONDUCTORS TO BE COPPER; ALUMINUM IS NOT ACCEPTABLE
 3. NO MORE THAN 3 CONDUCTORS TO BE RUN IN A SINGLE CONDUIT WITHOUT INCREASING WIRE SIZE TO OFF-SET DERATING FACTOR
 4. CIRCUIT C-15 ON GROUND FLOOR APT. G-1, G-2, G-5 & G-6 ONLY; SEE SHEET E-1



NOTE - WASHER & DRYER ON EACH FLOOR; WATER HEATER ON 2ND, 4TH, 6TH AND 8TH FLOORS



APT. G-1 THROUGH PH-1
(APT. G-6 THROUGH PH-6 OPPOSITE)



APT. 203 - THROUGH PH-3
(APT. 204 THROUGH PH-4 OPPOSITE)

APT. G-2 THROUGH PH-2
(APT. G-5 THROUGH PH-5 OPPOSITE)

SEE 1/4" PLANS FOR WALKWAY LIGHTING

NOTE - SEE SHEET E-1 FOR TERRACE LIGHTING.

TYPICAL APT. ELECTRICAL PLAN
(2ND FLOOR SHOWN)
SCALE 1/4" = 1'-0"