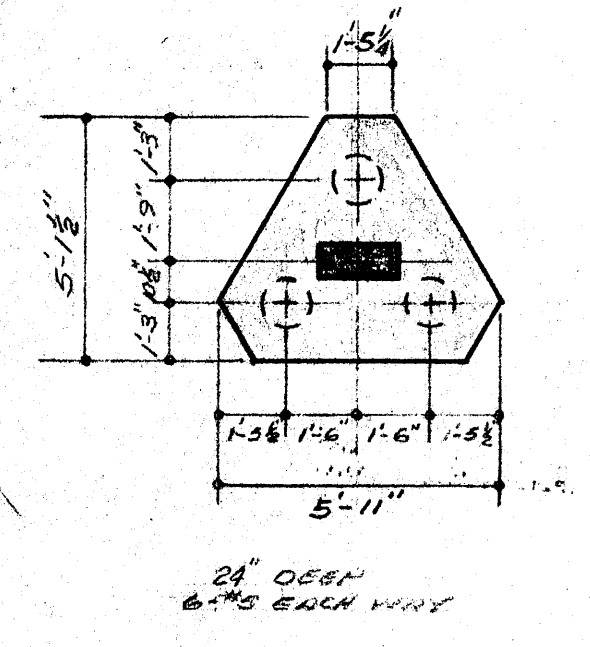


**STRUCTURAL DESIGN CRITERIA**

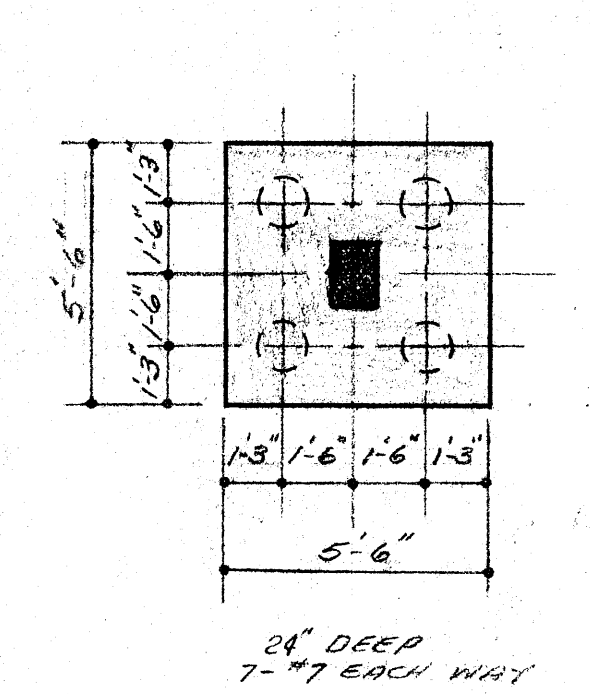
- 1. LIVE LOADS:**  
 A. ROOF — 30 PSF  
 B. FLOOR — 40 PSF APTS.  
 100 PSF STAIRS, CORRIDORS,  
 AND PUBLIC AREAS
- 2. WIND LOADS:**  
 SOUTHERN STANDARD BUILDING CODE  
 COASTAL REGION  
 0-30' — 25 PSF  
 31-50' — 35 PSF  
 51-99' — 45 PSF
- 3. DEAD LOADS:**  
 7" FLOOR SLABS — 88 PSF  
 7" ROOF SLABS — 88 PSF  
 8" MASONRY WALLS — 60 PSF  
 CONCRETE ITEMS (COLS, BEAMS, ETC.) — 150 PCF  
**SUPERIMPOSED DEAD LOADS:**  
 ROOF — 10 PSF  
 TYP FLOORS — 20 PSF
- 4. SOIL BEARING PRESSURE:**  
 2000 PSF

- NOTES:**  
 1) PILE CAPS TO BE CENTERED UNDER COLUMNS UNLESS OTHERWISE NOTED.  
 2) ALL PILES TO BE 32' LONG WORKING CAPACITY (SEE SPECS).  
 3) PILES & CAPS DESIGNED USING ULTIMATE LOADS. CAPACITY OF 56 TONS. (175 ULTIMATE LOAD PER PILE).  
 4) PILE TEST LOAD TO BE 64 TONS (SEE SPECS).  
 5) ALL FOUNDATION CONCRETE TO BE 3000 PSI. (INCLUDES GRADE BEARING STRENGTH).  
 6) ELEVATIONS TO BE AS SHOWN UNLESS NOTED OTHERWISE.  
 7) SEE DETAILS BELOW.

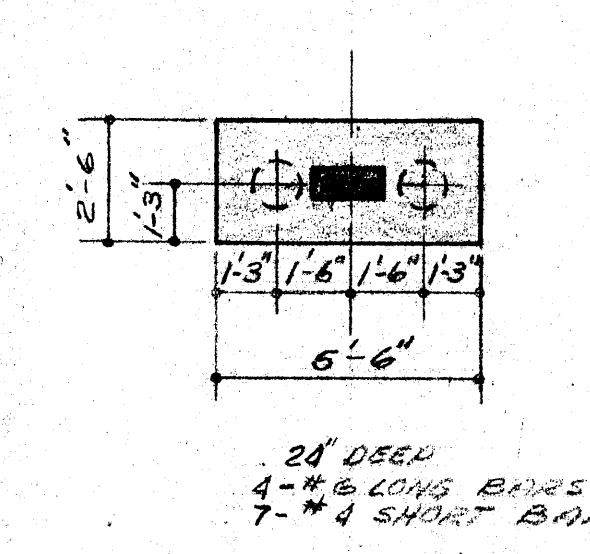
**3-PILE GROUP**



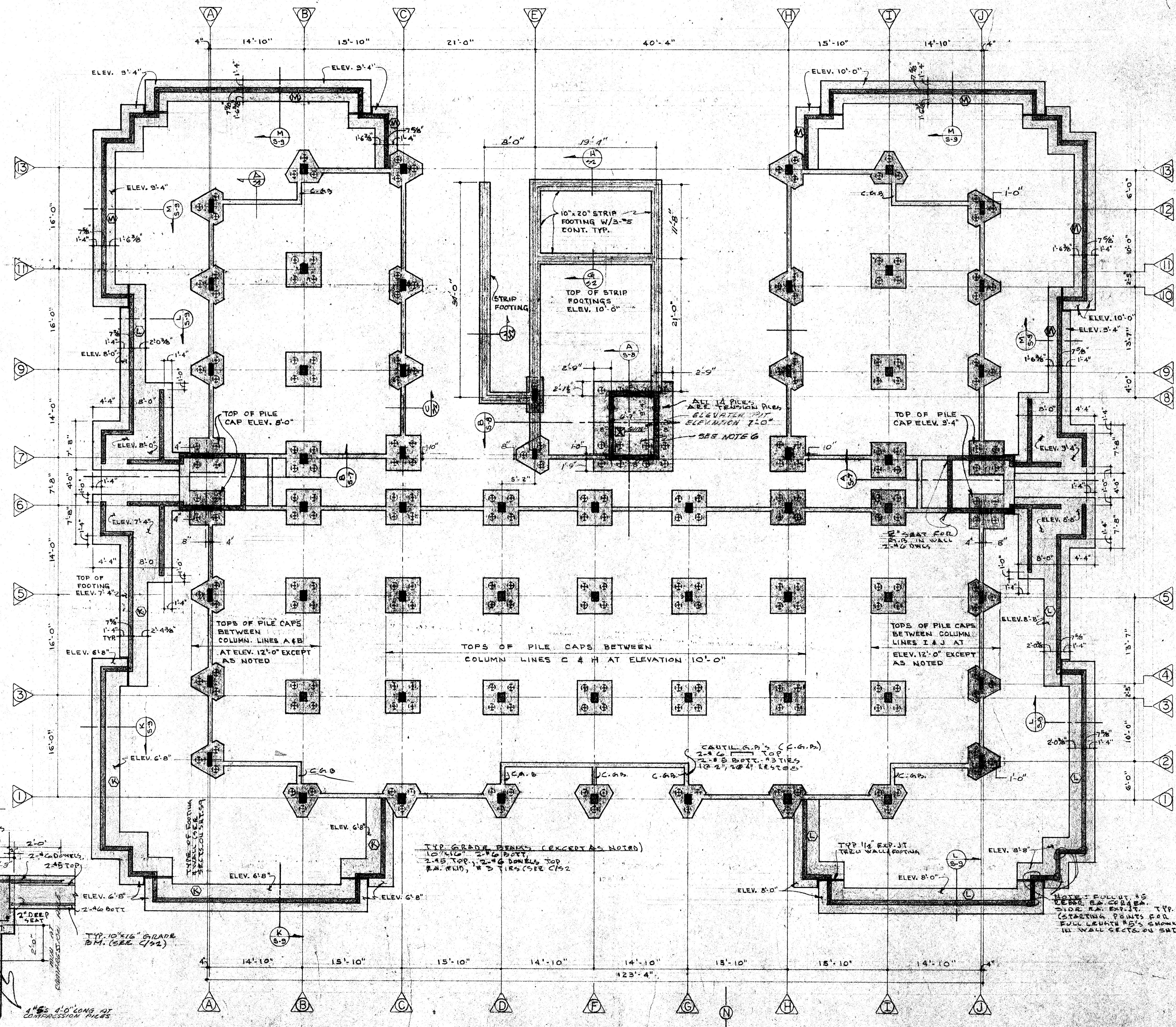
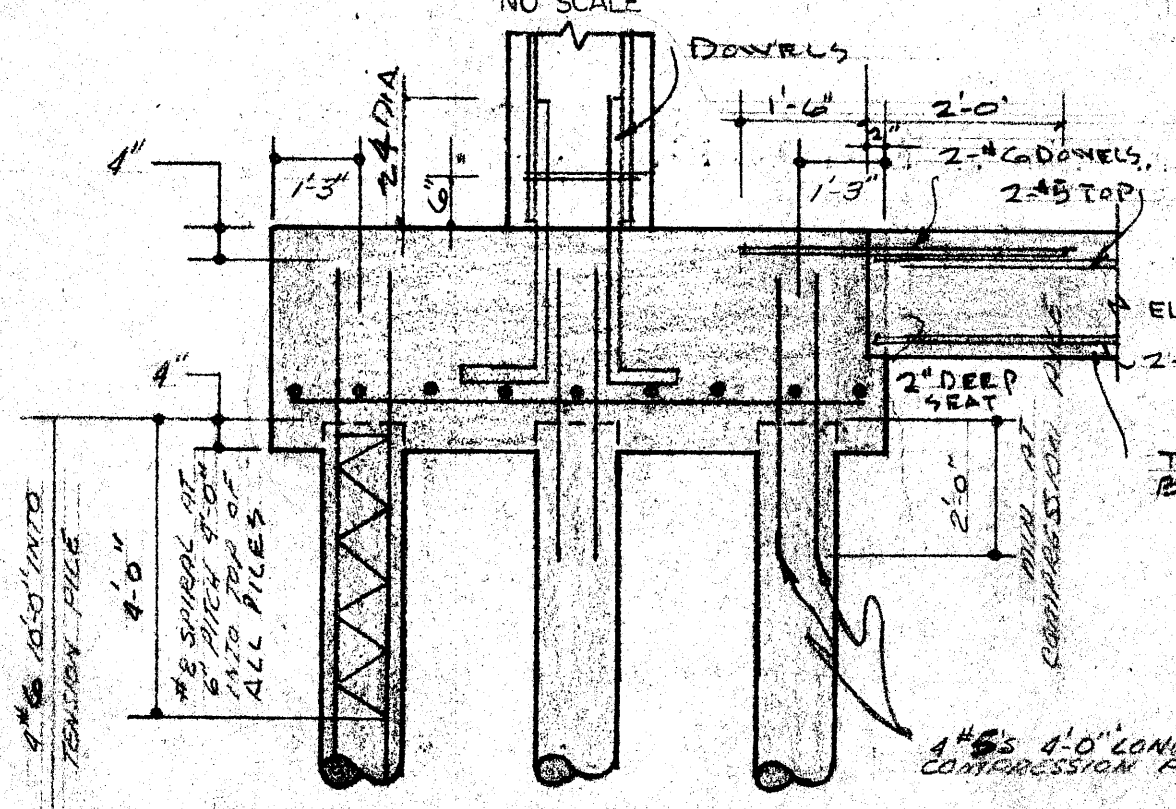
**4-PILE GROUP**



**2-PILE GROUP**



**TYPICAL PILE CAP DETAIL**



**FOUNDATION PLAN**  
 SCALE 1/8" = 1'-0"

WILLIAM A. SNELL, P.E. CHARTERED  
 Consulting Engineer  
 6000 18TH ST., P.O. BOX 278 SARASOTA, FLA. 34239